

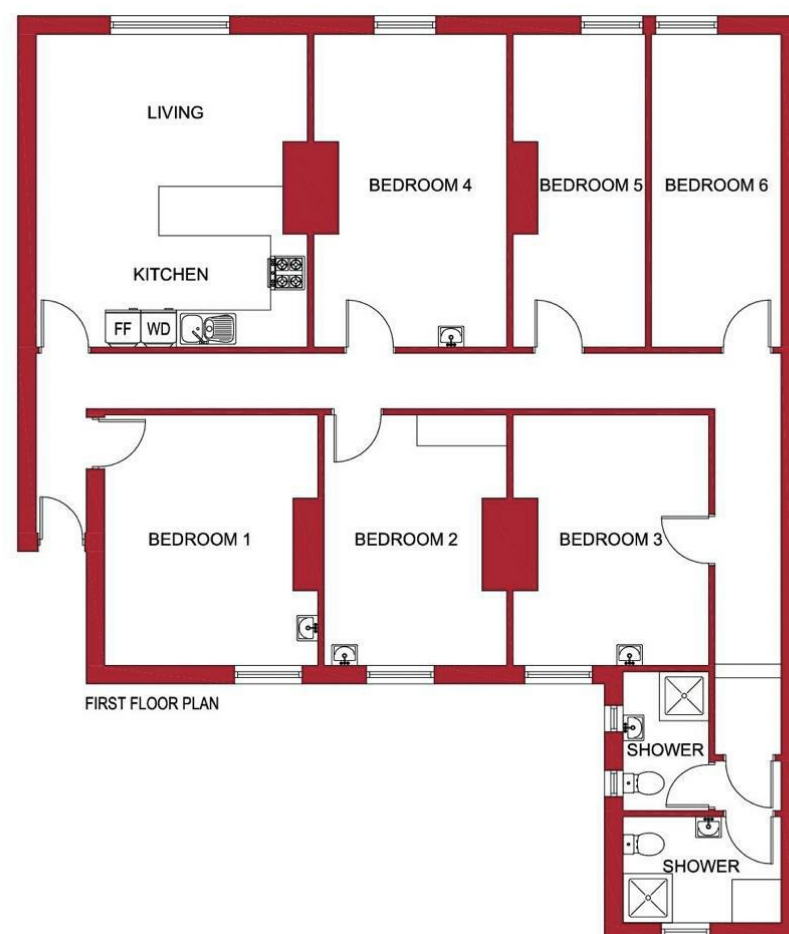
Viewings

Viewings by arrangement only.
Call 0114 2666300 to make an appointment.

Vendors Comments

Add text here

Energy Efficiency Rating		
	Current	Potential
Very energy efficient - lower running costs		
(92 plus) A		
(81-91) B		
(69-80) C		
(55-68) D		
(39-54) E		
(21-38) F		
(1-20) G		
Not energy efficient - higher running costs		
England & Wales	EU Directive 2002/91/EC	

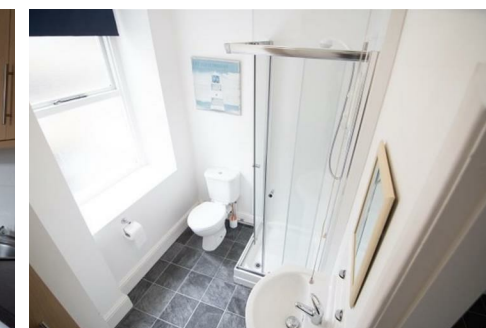
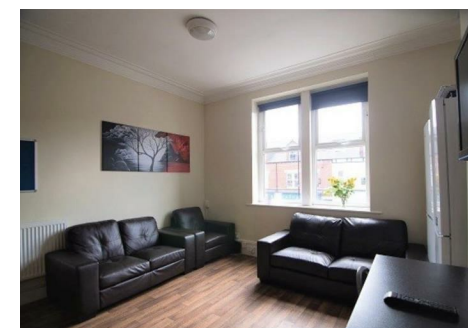
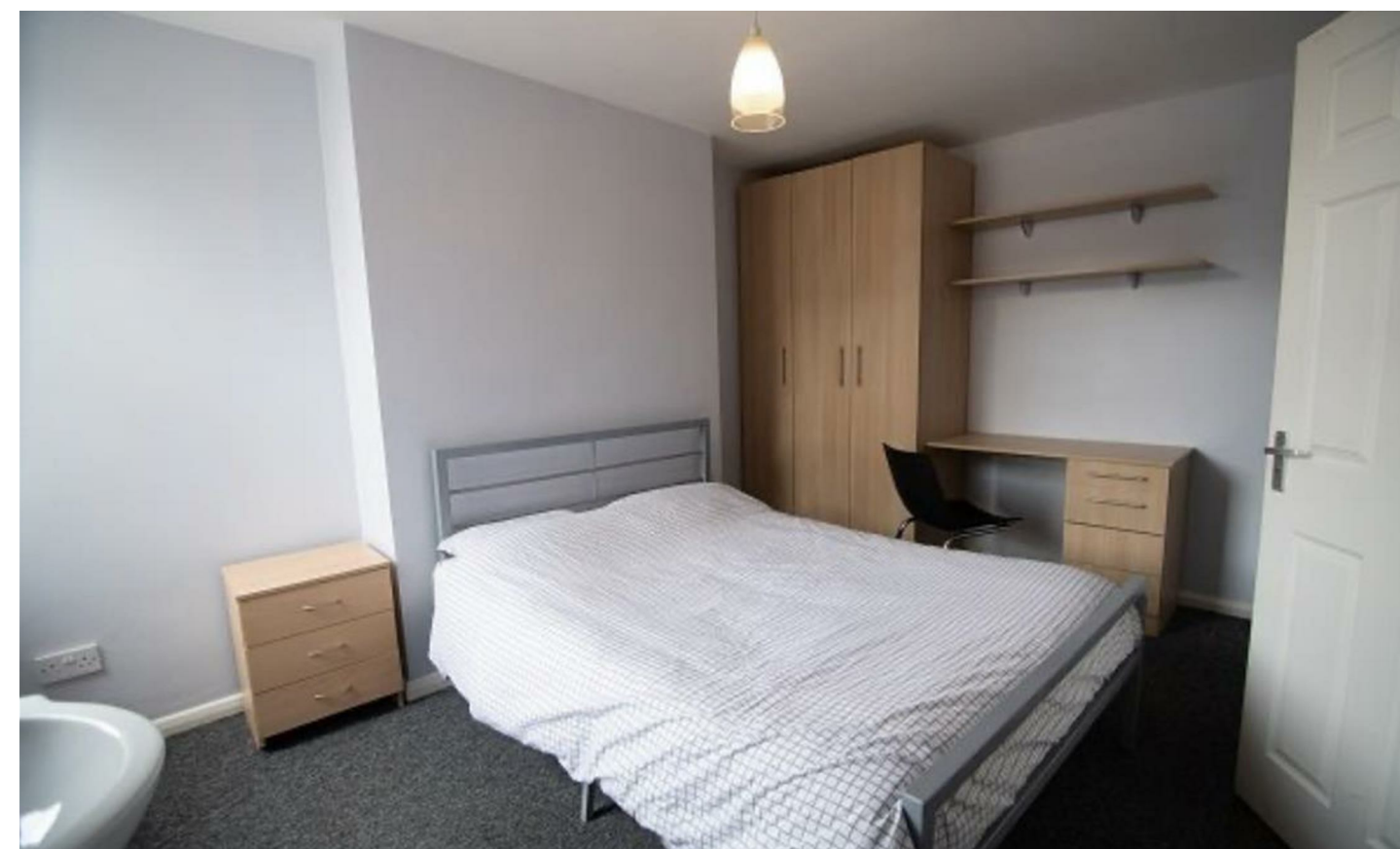


JC SALES & LETTINGS

Tel: 0114 483 0038

E-mail: sales@jc-salesandlettings.com

Website: www.jc-salesandlettings.com



Room 1, 294A Ecclesall Road, Sheffield, S11 8PE

£110 Per week

- £110 per week
- Double room in a 6 bedroom shared house
- Close to an abundance of local amenities
- Early viewing highly recommended to avoid disappointment
- All bills included in the rent (wifi, gas, electric, tv licence and water bills)
- Brilliant location on Ecclesall Road
- Students only
- EPC Grade C

Room 1, 294A Ecclesall Road, Sheffield S11 8PE

*** STUDENT *** £110 PER WEEK, TO INCLUDE ALL BILLS ***
LARGE DOUBLE BEDROOM in a SHARED, six bedroom property available to STUDENTS, with TWO BATHROOMS.
A VERY WELL LOCATED, six bedroom APARTMENT close to an abundance of local amenities and situated in the HIGHLY SOUGHT AFTER location off ECCLESALL ROAD.
In brief the accommodation comprises: open plan lounge / kitchen, large double bedroom and two bathrooms. An early viewing is highly recommended to avoid disappointment! EPC Grade C.

1

1

1

C

Council Tax Band: B

